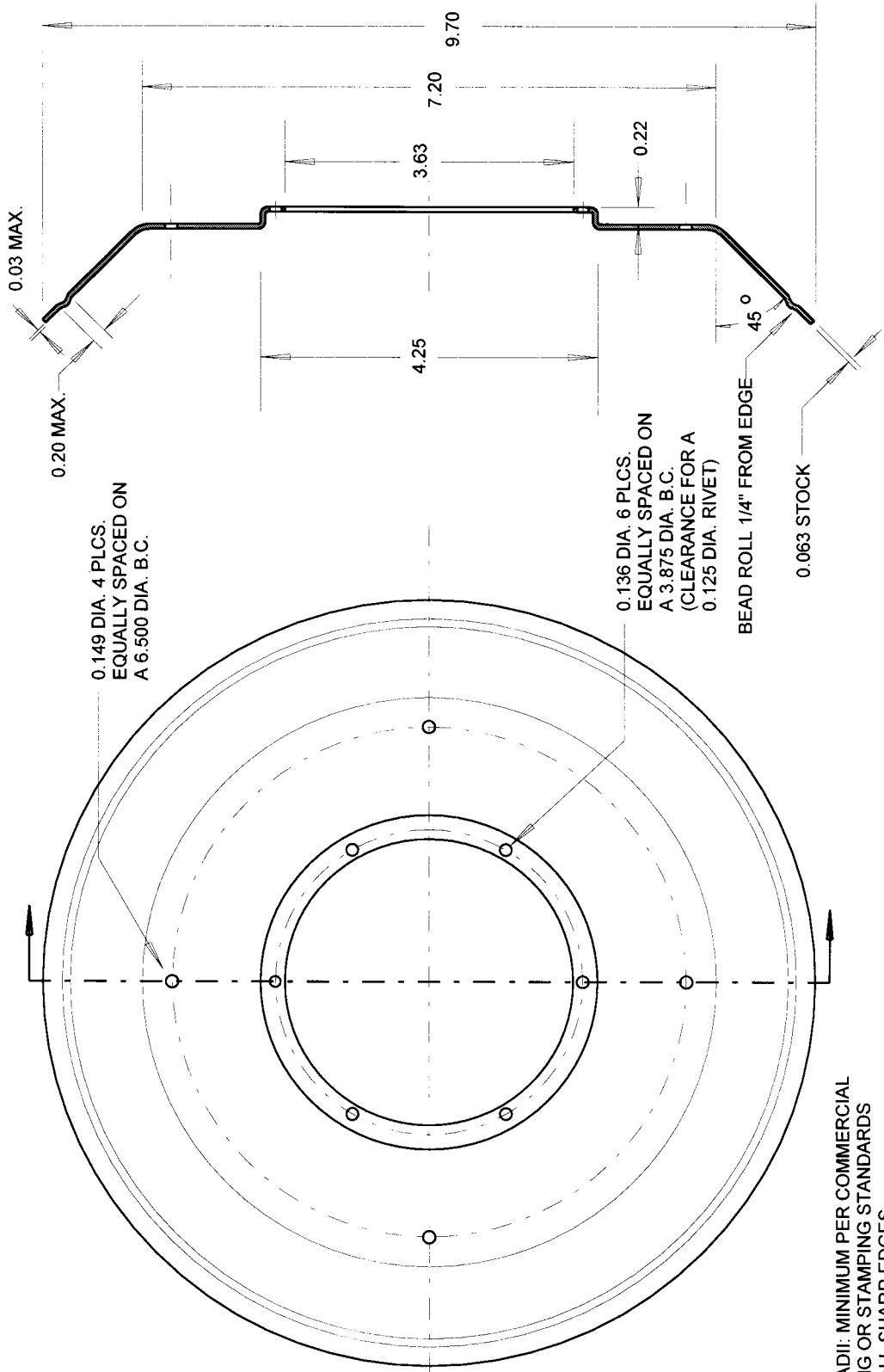


FIGURE L-11. 10-MICRON INLET, LOWER



NOTES:

- (1) BEND RADI: MINIMUM PER COMMERCIAL SPINNING OR STAMPING STANDARDS
- (2) BREAK ALL SHARP EDGES
- (3) MATERIAL IS SPUN ALUMINUM 6061-T0, POST-HEAT TREATED TO -T4
- (4) CLEAR ANODIZE

TOLERANCES		
2 PLCS	3 PLCS	ANGLE
+/- 0.010	+/- 0.005	+/- 1/64
		+/- 15'

ALL DIMENSIONS ARE INCHES