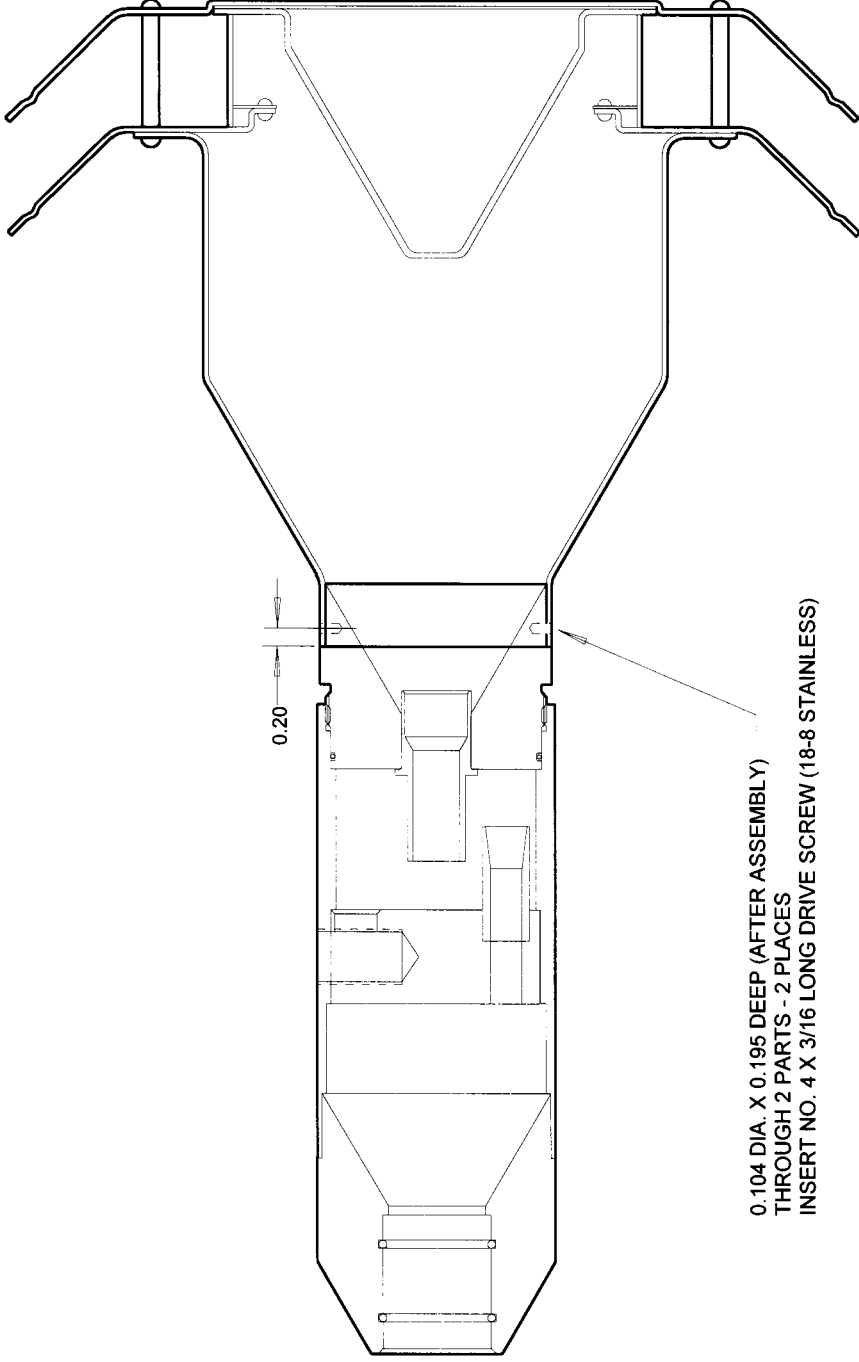


FIGURE L-2. 10-MICRON INLET, ASSEMBLY



0.104 DIA. X 0.195 DEEP (AFTER ASSEMBLY)
 THROUGH 2 PARTS - 2 PLACES
 INSERT NO. 4 X 3/16 LONG DRIVE SCREW (18-8 STAINLESS)

NOTES:
 (1) SEE ASSEMBLY UPPER AND LOWER SECTION
 FOR ITEM DETAILS

TOLERANCES			
2 PLCS	3 PLCS	FRAC	ANGLE
+/- 0.010	+/- 0.005	+/- 1/64	+/- .15°

ALL DIMENSIONS ARE INCHES