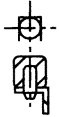


# SAE HEADLAMP TEST FIXTURE 142 X 200 MM

DIMENSIONS ARE IN mm

MACHINE MATERIALS:  
DISC, ARM AND BRACE-ALUMINUM-SAE-AA-6061-T6 OR EQUIV  
COIL SPRING AND LEVEL CLIP-SPRING STEEL  
SAE 1050-CADMIUM PLATE

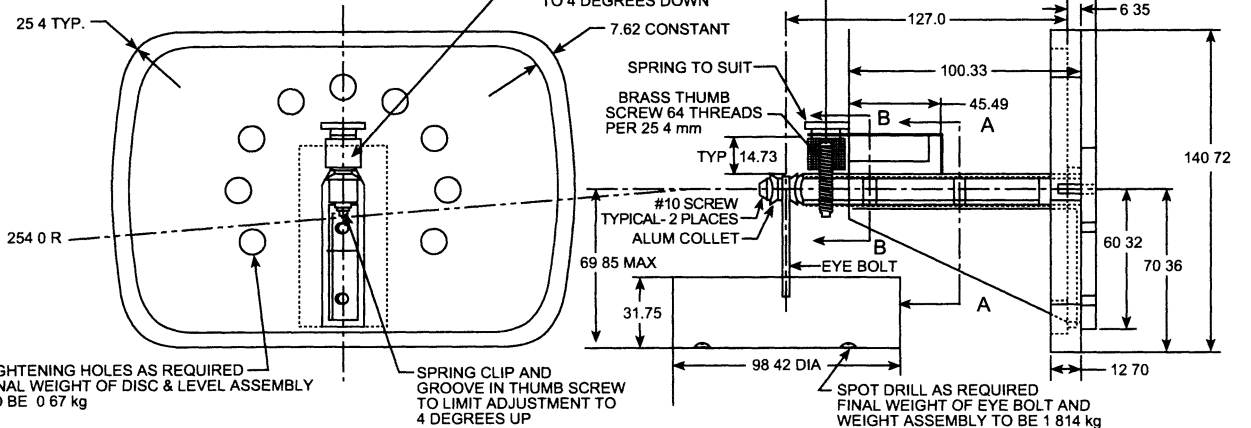
WEIGHT AND EYE BOLT ASSEMBLY-STEEL-CADMIUM PLATE  
SCREWS-ALUMINUM-MACHINE THREADS  
MACHINED DIM  $\pm 0.13$  mm  
SAE 142 X 200 mm - HEADLAMP TEST FIXTURE



SECTION B-B



SECTION A-A



TYPE B HEADLAMP AIM DEFLECTION TEST SETUP

FIGURE 17