

SAE HEADLAMP TEST FIXTURE 100 X 165 MM

DIMENSIONS ARE IN mm

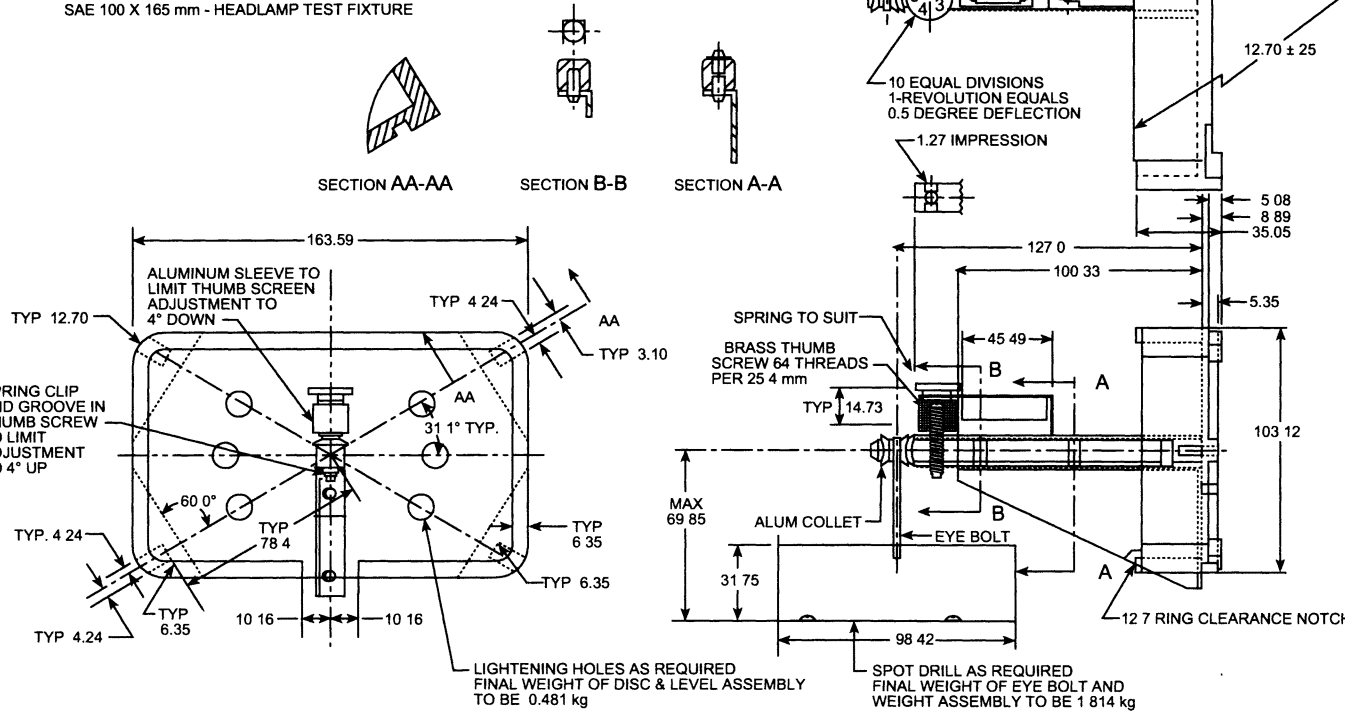
MACHINE MATERIALS:

DISC, ARM AND BRACE-ALUMINUM-SAE-AA-6061-T6 OR EQUIV
COIL SPRING AND LEVEL CLIP-SPRING STEEL
SAE 1050-CADMIUM PLATE

WEIGHT AND EYE BOLT ASSEMBLY-STEEL-CADMIUM PLATE
SCREWS-ALUMINUM-MACHINE THREADS
MACHINED DIM ± 0.13 mm

SAE 100 X 165 mm - HEADLAMP TEST FIXTURE

- (1) 5.08 BUBBLE MOVEMENT MUST INDICATE 0.25 DEGREE SENSITIVITY OR BETTER
- (2) MUST BE ACCURATE TO WITHIN ± 0.05 DEGREE THROUGH A RANGE OF ± 4 DEGREES



TYPES A AND E HEADLAMP AIM DEFLECTION TEST SETUP

FIGURE 16