

# Headlamp Test Fixture 92 x 150 mm

Dimensions are in mm

Machine materials:

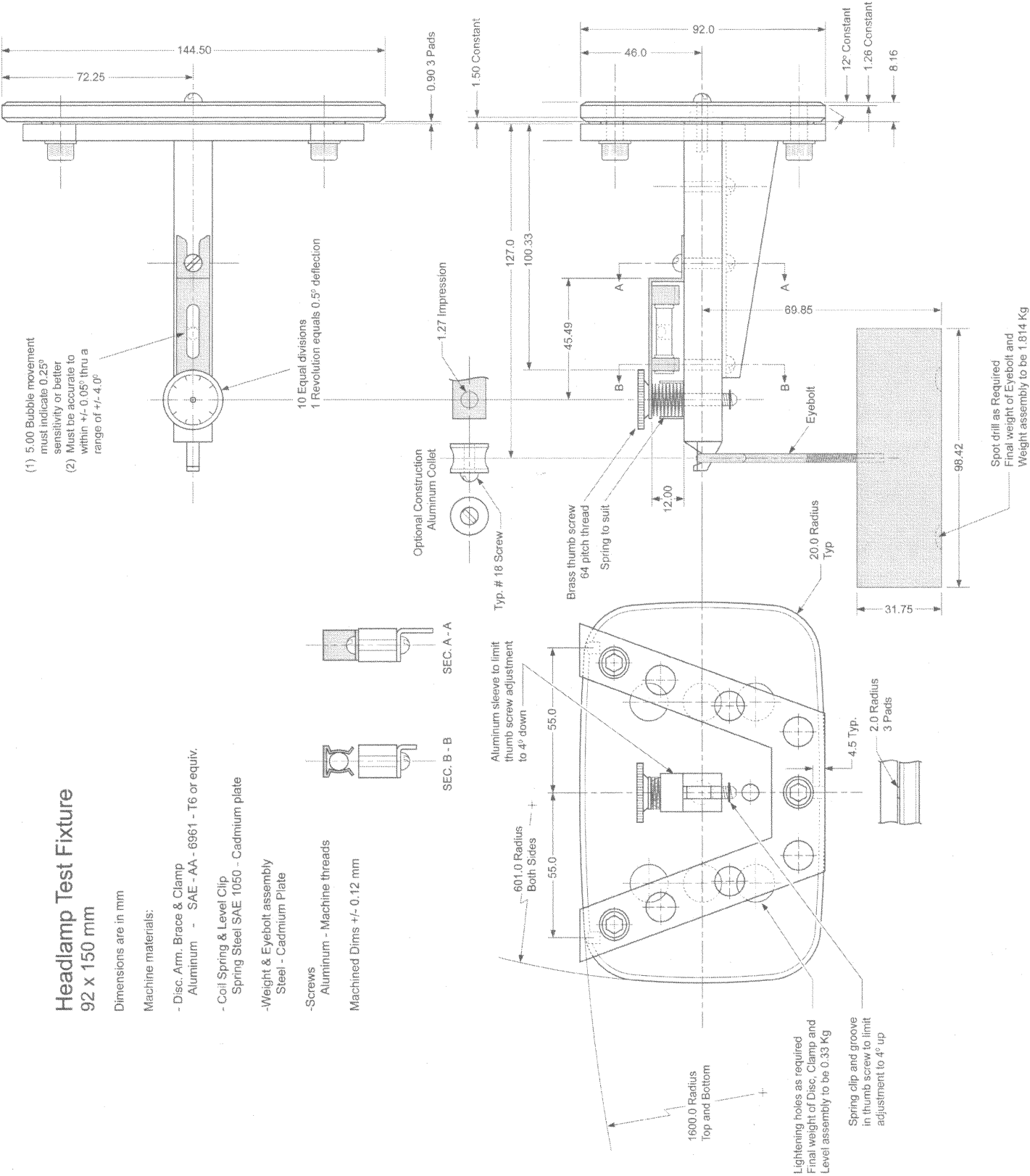
- Disc, Arm, Brace & Clamp  
Aluminum - SAE - AA - 6961 - T6 or equiv.

- Coil Spring & Level Clip  
Spring Steel SAE 1050 - Cadmium plate

- Weight & Eyebolt assembly  
Steel - Cadmium Plate

- Screws  
Aluminum - Machine threads  
Machined Dims +/- 0.12 mm

- (1) 5.00 Bubble movement must indicate 0.25° sensitivity or better
- (2) Must be accurate to within +/- 0.05° thru a range of +/- 4.0°



92 x 150 mm HEADLAMP AIM DEFLECTION TEST SETUP

FIGURE 14