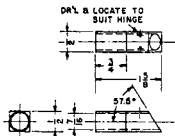
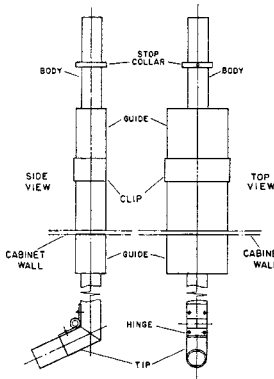


FLAME HEIGHT GUIDE
1 REQ. STEEL

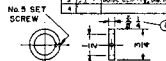


BURNER TIP
1-REQ. STEEL

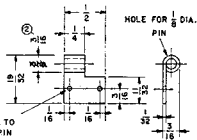


BURNER ASSEMBLY

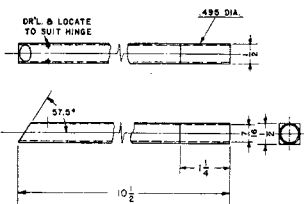
ORIGINAL DATE OF DRAWING		REVISIONS		NO.	DATE
1	1	1	1	1	1
2	1	1	1	1	1
3	1	1	1	1	1
4	1	1	1	1	1



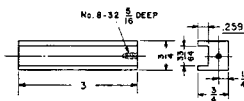
BURNER BODY STOP COLLAR
1 REQ. ALUM.



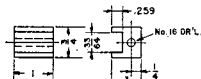
BURNER BODY HINGE
2 REQ. BRASS



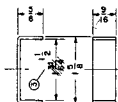
BURNER BODY
1 REQ. ALUM.



BURNER BODY GUIDE (I.S.)
2 REQ. ALUM.



BURNER BODY GUIDE (O.S.)
2 REQ. ALUM.



GUIDE CLIP
1 REQ. ALUM.

REV. NO.	DESCRIPTION	BY	CHKD.
1	NATIONAL BUREAU OF STANDARDS WASHINGTON, D. C. 20536 VERTICAL FLAMMABILITY TESTER DETAILS		
2	FOR OFFICE OF FLAMMABLE FABRICS		
3	MAT'L - SUIT' & THICK' VAR. SCALE VAR. DIMENSIONS IN INCHES		
4	TOLERANCES	FRACTIONS	DECIMALS
5	FINISHES	BY	TEST USE
6	QUANTITIES	BY	TEST USE
7	DATE	BY	TEST USE
8	DR'G. NO.	BY	TEST USE
9	DATE	BY	TEST USE
10	DR'G. NO.	BY	TEST USE